



# EXETER LIVESTOCK CENTRE

# MARKET REPORT

## March 2025

**Friday 28<sup>th</sup> March – Store Stock Market**



Friday 28<sup>th</sup> March

**515 STORE CATTLE & STIRKS – 10:00 AM**

Auctioneer: Simon Alford 07789 980203

**Store Steers to £2750 - Store Heifers to £2440**

No place for the faint hearted around the store cattle ring this Friday here at Exeter with lower store cattle numbers forward only looking to 'pour oil' on an already burning fire! All categories on offer dearer again on the week with strong buyer support ensuring a brisk trade when perhaps those longer term, spring 2024 born suckler bred steers and heifers looked the most expensive of all. Steers ran out to a massive top of £2750 given for a couple of outstanding Herefords (24m) from Dan Tooze up from Breadsands whilst an eye catching black Limousin steer (22m) sold on behalf of the late CR Mildon drew £2700 with a pen of five strong British Blue bullocks (22m) coming off the same farm rising to £2670 apiece. The latter were however eclipsed by a standout bunch of five Blue bullocks (21m) from David and Wendy Holland of Dolton which returned £2690 a life. Next up was a grand South Devon steer (23m) making £2680 for Michael Tooze of Brixham followed by three more of a similar age at £2200 for Steve Cane up from Spriddlestone, Plymouth and the best of the older Charolais steers (30m) at £2590 for Nick Lee and Sons of Shobrooke. Also, two strong, forward Simmental steers (24m) from Dan Tooze saw £2460 each. Other older steers worth a mention included a trio of well farmed Longhorns (24m) from Pete Grabham of Tiverton, Fleckvieh bullocks (20m) to £2200 for Rich Bond of Blackawton and an Aberdeen Angus steer (23m) making £2100 for Andrew and George Palk of Marlton. Three super Devon crossbred steers (17m) from J and K Northcott up from Tideford sold readily at £2170 apiece. As mentioned previously, those smart beef bred yearling cattle were the trade of the day with well bred and fed Simmentals easing to a creditable £2260 for Jeff and Ian Stacey of Looe followed by Charolais youngster at £2020 for Rob Bickle of Bridestowe and £1980 for Martin Littlejohns of Meldon, Okehampton. Rob Bickle also parted with Limousin steers (11m) for £1790 whilst David Heath of Sherford also sold April 2024 born steers for £1490 with the best of his South Devon types. Nick Lee and Sons topped the store heifer section with an imposing Simmental (30m) drawing £2440 followed by a raft of South Devon females (23m) firstly making £2420 for Michael Tooze, then £2330 and £2310 for Martin and David Sampson of Chudleigh followed by one at £2240 for Steve Cane. Nick Lee and Sons were back when parting with a big strong Charolais heifer (30m) for an impressive £2270 with Aberdeen angus and Limousin females (20m) reaching £2240 and £2180 for Robert Moore of Diptford and Andrew Banbury in from Crediton respectively. Further Limousin heifers of note saw pair to £2070 (30m) for Peter Hooper of Bovey Tracey and £2060 (22m) for Jeff Harvey from nearby Hennock. Robert Harvey up from Plymouth sold a nicely covered British Blue heifer (23m) for a decent £2080 whilst later born (14m) Blues saw a big bunch of nine rise to £1640 each for David Burrough and Family from Chardstock. Also, three more smart Devon cross sorts from J and K Northcott saw their heifers (17m) gross £2040 a life whilst three more good heifers from Steve Cane saw his Herefords (17m) make £1880 each. Best of the yearling store heifers came from Martin Littlejohns with his best pen of Charolais looking as dear as anything sold on the day when picking up £1680.

***Please could we remind all customers of the need to clean and disinfect their vehicles and to complete the Vendor Declaration on the back of the entry forms.***

***Thank you***



- Competitively priced farm medicines
- Dairy and beef fertility clubs
- 24/7/365 veterinary cover
- Livestock fertility testing and advice
- VetTech services
- In-house labs and lambing bays

[www.penbodevets.co.uk](http://www.penbodevets.co.uk)

Holsworthy | Bradworthy | Stratton | Launceston | Camelford



**EXETER LIVESTOCK CENTRE**  
**FORTHCOMING**  
**SUCKLED CALF & SPRING**  
**CONTINENTAL CATTLE SALES**

**7th March 2025**

**1st Spring Judged Sale of Continental & Continental  
Cross Store Cattle**

**21st March 2025**

**2nd Spring Judged Sale of Continental & Continental  
Cross Store Cattle**

**11th April 2025**

**“Heart of Devon” 13th Anniversary to include  
3rd Spring Judged Sale of Continental &  
Continental Cross Store Cattle, Show,  
Sale of Suckled Calves & Stirks &  
SW Charolais Show & Sale of Bulls & Females**



**EXETER LIVESTOCK CENTRE**

Matford Park Road, Exeter, Devon, EX2 8FD

01392 251261

[livestock@kivells.com](mailto:livestock@kivells.com)

[www.kivells.com](http://www.kivells.com)

## **167 STIRKS & SUCKLED CALVES**

**Auctioneer: Ian Caunter 07813 068935**

A quality show of stirks and suckled calves with trade yet again hitting a new level. John Redman in from Chagford presented Simmental cross steers (11m) which raced to £1610 whilst the Lee Family down from Shobrooke presented South Devon steers of a similar age hitting £1580. A super run of outstanding dairy bred Blue stirks from Hubert Elworthy, Matthew Cooke & Sarah Hawkey down from Chulmleigh met keen interest with the best topping out at £1500 (6m) with others to £1280, £1260, £1230 & £1130 x2 (5m). IG Mortimore & Son in from Chagford presented Charolais cross steers (12m) which realised £1490 whilst MJ & MW Bickle of Bridestowe sold sweet Limousin cross steers (10m) which attained £1310. James Williams up from Yelverton presented Charolais cross steers (9m) which levelled out at £1160 whilst further, nicely presented Blue stirks this time from Andrew Barker of Dunsford hit £1110 with and others to £1090 (6m). RE & EAM Vooght of Newton Abbot presented Angus steers (12m) which attained £1020 whilst Simmental steers off the same farm (10m) attained £1010. Another neat run of dairy bred Blue steers from the Courtier Family of Whiddon Down saw the best top out at £970 (6m) with younger types (5m) realising £940. Best of the Friesians topped out at £740 for Andrew Barker (7m). Heifers topped out at £1300 for IG Mortimore & Son presenting a pen full of Charolais crosses (12m). Dairy bred Angus heifers (11m) from AF Willmington Contracting down from Branscombe levelled out at £1000 whilst young, sweet, sappy Blue heifers from the Courtier Family attained £870 with others (5m) to £850. Further Blue heifers from Andrew Barker attained £840 (6m), Longhorn heifers from AF Willmington Contracting hit £820 (10m) whilst Charolais cross heifers (8m) from James Williams achieved the same figure. Bulls topped out at £900 for AP & RE & MA Retter down from Monkton presenting Blues (6m) whilst South Devon bulls straight off the cow from the Tully Partnership of Waddeton realised £850 with others to £800 just 4m.

## **74 CALVES 10.15 AM**

**Auctioneer: Mark Davis 07773 371774**

A medium sized entry of calves and a mixed bag regarding quality, however all classes and types looking a fantastic trade once again with some bottom end types seeing a lot of interest. Top of the section was £658 given for a smart pair of reared Hereford bulls (4m) in from D Hooper, Saltash who sold another pair well at £630 (4m). A superb run of British Blue bulls saw huge demand and soared up to £595 for a young fresh type in from RC & CJ Parris, Honiton who sold another to £550, further Blues to £560 for AP & RE & MA Retter, Monkton and £540 for RJ & KL Emmett, South Molton with 8 of young Blue bulls over £500! A ripping Angus bull made £550 for MJ & NM Shire, Woodbury Salterton more to £488 for R Cheriton, Sandford with plenty of good Angus bulls over £400. Limousin bulls up to £515 with others to £500 for MA & ME Harris, Slapton who sold more to £432 followed by Simmental bulls at £440 for KG & SRJ Wotton, Dittisham. Heifers reached £510 twice for some smart reared Blue heifers in from O Jones, Shillingford Abbot followed by young Blue heifers looking a serious trade at £485 presented by HJ Baldwin, Meshaw and £475 for Towhill Farm Ltd, Broadclyst. A well put together Angus heifer reached £398 sold by MJ & NM Shire again, others to £390 for AP & RE & MA Retter again who had another at £385 looking a super price. A lovely Limousin heifer soared away to £450 for MA & ME Harris again with Simmental heifers to £420 x2 for KG & SRJ Wotton again. Friesian bulls reached £400 for a reared sort in from HJ Baldwin, Meshaw with all Friesians averaging £172.67. Another very strong trade, keeping the calves coming to meet the very strong demand.



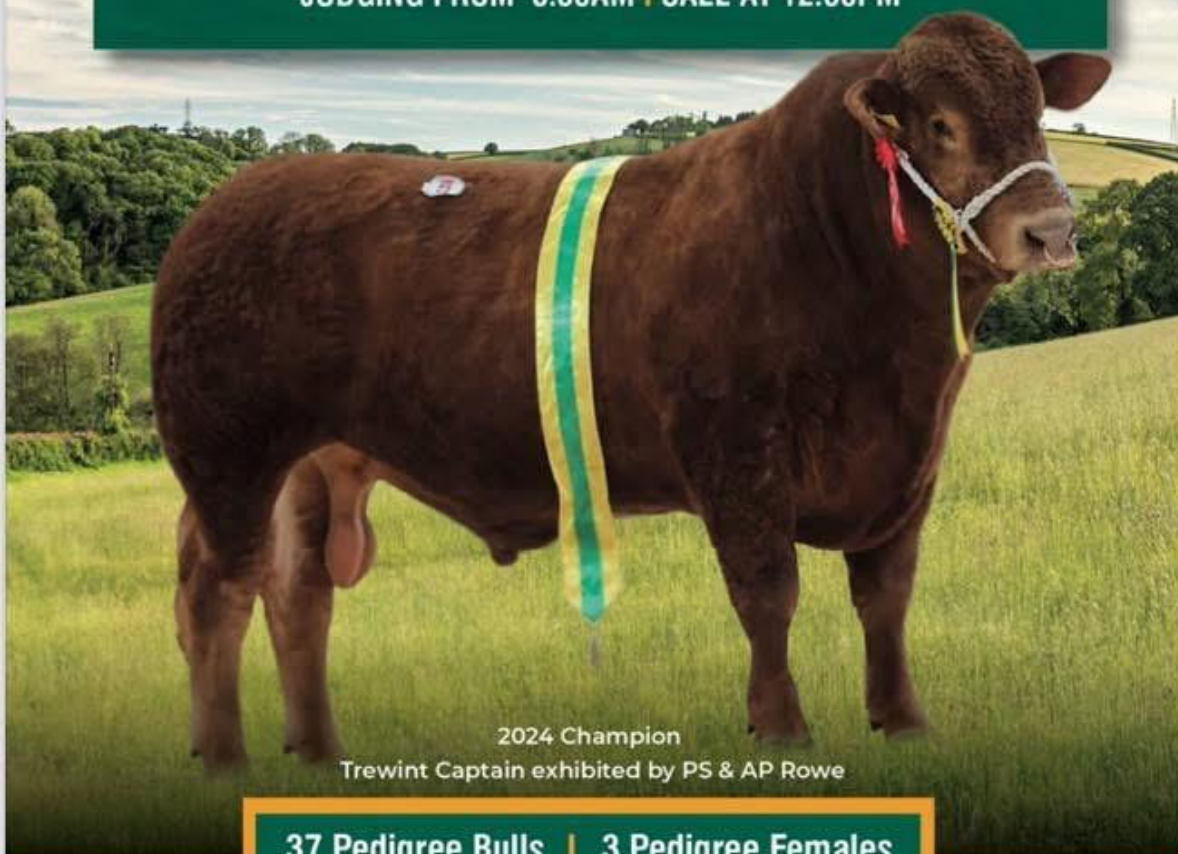
# **SOUTH DEVON HERD BOOK SOCIETY'S SPRING SHOW & SALE 2025**

**EXETER LIVESTOCK CENTRE, MATFORD, EXETER, EX2 8FD**

Sale by Auction under NBA Terms & Conditions of Sale

**WEDNESDAY 9<sup>TH</sup> APRIL 2025**

**JUDGING FROM 8.30AM | SALE AT 12.30PM**



2024 Champion

Trewint Captain exhibited by PS & AP Rowe

**37 Pedigree Bulls | 3 Pedigree Females**

All TB tested and either CHaCs accredited free of BVD or individually tested negative for BVD antigen, and all vaccinated for BVD at least one month prior to Sale date.

SINGLE STEP BREEDPLAN EBVs incorporating genomics



**190 DAIRY 10.15 AM**  
**Auctioneer: Mark Davis 07773 371774**

**\*\*\* 157 In Milk Grazing Crossbred Cows & Heifers averaged £2,011 \*\*\***

A super entry of Dairy Cattle saw a tremendous trade from start to finish attracting buyers from Carmarthen, Shropshire across the South West!

The first heifer in the ring was a smart Pedigree Holstein Heifer from Martin & Di Webber of Drewsteighton, she sold well at £3,200 and set the trade for the day. Next in the ring was a Pedigree Jersey heifer from Gareth Hutchings of Launceston, she sold well at £1600.

The dispersal Sale of the Crossbred, grazing late autumn & winter calving herd on behalf of Stephen & Lucie Home of Holsworthy sold to an electric trade with 70 cows out of the 98 making over £2000! The cows were a three-way cross of Danish Red, Jersey & Holstein which produced super quality balanced cows with excellent udders! Top of the day was 2,700gns for a super second calver due in October. Five young Cows made 2,600gns with others to 2,550gns, 2,500gns & 2,400gns on many occasions. Crossbred In Calf Heifer due November and December sold to an exceptional trade topping at 1,680gns with others to £1,600gns & £1,500 five times. This was an exceptional sale with the following outstanding averages achieved:

98 In Milk Cows & Heifers (inc all faults)	£2152
21 In Calf & Served Crossbred Heifers	£1351
Overall average	£2010 per life

The consignment of grazing type British Friesian & Crossbred Cows on behalf of Trink Dairy Ltd of St Ives sold to a phenomenal trade! The 5,000 litre grazing cows were all due September & October and 20 sold over £2,000 to a top of £2,400 with others to £2,300 & £2,250. In Calf Heifers sold to £1,350.

56 In Milk Cows & Heifers inc 18 6th-9th Calvers	£1763
10 In Calf Heifers	£1219

**28 PIGS**  
**Auctioneer: Andrew Varney**

A small entry of sows met an easier trade selling to a top price of £128 from Messrs EG & MA Dunn of Plympton, others to £110 from R Ovenell of Langtree and £90 from TWM Taine of Blackawton.

Cull boars to £145 from EG & MA Dunn of Plympton, others to £100 from J Foan of Cheriton Fitzpaine and £80 from Mr L J Turner of Beaworthy.

A handful of prime pigs met a good trade with a top price of £204 (151.1ppk for 135kg), others to £155 (102.6ppk for 151kg) and £145 (106.6ppk for 136kg) all from EG & M A Dunn.

Store pigs met a firm trade selling to £60 & £50 from TWM Jaine.

**Next Pig Sale here at Exeter will be held on Friday 11<sup>th</sup> April, it is vital that you let us know of your potential entries in plenty of time so we can advise vendors together with prospective purchasers of expected numbers forward.**

**1795 SHEEP – 10.45 AM**  
Auctioneer: Russell Steer 07788 318701

**Orphan Lambs to £78   Store Hogs to £166   Grazing Ewes to £195**  
**Double Couples to £370   Singles to £295**

**87 ORPHAN LAMBS & GOAT KIDS**

A mighty entry of 87 orphan lambs and 8 goat kids met with a decent trade overall with plenty of serious bulk buyers around the pens ensuring a strong trade from start to finish. West Middlewick Farm of Nomansland topped the sale at £78 for a pair, another pair at £60 and others at £55 as Jerry Sanders-Carr of Exminster reached £73 and £65 and Cecil Partridge of Calverleigh sold seven at £60 apiece. Plenty of young setting on lambs between £25 and £35 to give an overall average of £37 overall and the best of the young goats sold at £20 for T & F Farming of Dawlish.

**1145 STORE HOGGS**

A bigger show of 1145 store hogs contained probably more top end short keep hogs, but also more bottom end, last draw sorts leaving us with a very similar average of £119 overall. Tom Elliott of Winkleigh exhibited a tremendous run of forward hogs that sold to £166, £161, £160, £159, £158.50, £157, £156 twice, £155 twice and £154 twice as Charlie Hutchings and family of Bradninch achieved £155 and Robert & Jamie Rogers of Totnes saw their best pen make £152. Farming sorts often £130 £150 with the next draw down nearly all £100 plus but lots of barrel scrapings and those with faults sold on realization from £9 to £90 to give an average of £119.

**96 GRAZING EWES & 3 BREEDING EWES**

Nearly 100 grazers saw no let up in trade ahead of the celebrations this weekend with Tracey Stoneman of Chudleigh reaching £195 & £174, Mike & Steve Gilpin of Dawlish at £188 & £178 and £178 also for Jeff Harvey of Hennock as Robert Rogers sold mules to £170. Plenty of business done between £130 & £165 and it looks like ewes will be needed again on Monday please but in smaller numbers. A pen of end of May lambing wool shedding ewes from M Thompson of Beaworthy sold at £110.

**192 EWES & 264 LAMBS (456 LIVES)**

A larger entry of 192 Ewes with their 264 lambs at foot sold to another strong trade with yet more fresh faces in the alleys and those that have been the last few weeks are now upping their budget to try and secure some numbers. Robert Chanin of Thorverton topped the sale with Chaviot Mule FM ewes with twins at £370, closely followed by Duncan Kittow of Tiverton with Suffolk crosses of similar age at £168 and younger ewes with doubles at £355 for BH Lane of Combe Raleigh. Plenty of other double couples over £300 with a strong pen of Mule doubles at £325 for RH Henson of Cadeleigh whilst Jim Winzer of Modbury sold the best of his straight out the shed at £292. Singles climbing to £295 for an outstanding pair of Suffolk cross FM's with smart lambs from West Middlewick Farm of Nomansland and then three other vendors claimed £280, being Duncan Kittow, Rob Davis of Chagford and BH Lane with large penful's. Plenty of strong singles £120 to £130 per life with the second draw singles either side of £100 per life and the second draw doubles £80-£90 per life and mid £200's. Some bottom end sorts from £62 to £75 per life and every couple averaged £241 or £101 per life.

### **IMPORTANT NOTICE TO ALL SHEEP VENDORS:**

- *Please ensure all sheep are tagged in the approved (EID) manner before arrival at the livestock market and checked before you leave.*
- *Please ensure all VAN numbers are available when booking in your sheep, VAN numbers are only valid for 12 months from date of issue, ensure yours is up-to-date.*
- *Please complete the market entry form as well as the sheep licence making sure you have completed the number of sheep you have bought to market.*

*Thank You for your Co-operation*

# KIVELLS

Established 1885

[www.kivells.com](http://www.kivells.com)



## **FODDER FOR SALE BY PRIVATE TREATY**



### **X180 Round Bale Haylage**

1<sup>st</sup> cut, chopped, made well suitable for sheep and cattle, good access. Located at Cheriton Fitzpaine

### **X100 Round Bale Organic Silage**

1<sup>st</sup> cut, white and red clover mix. Located at Feniton

For further information or entries for the above please contact Exeter Livestock Centre  
Call: 01392 251 261 or Sam Hutchings on 07553 307293



## FORTHCOMING SALES

### **MONDAY 31<sup>ST</sup> MARCH – EXETER LIVESTOCK CENTRE**

*Weekly Prime Stock Market*

### **FRIDAY 4<sup>TH</sup> APRIL – EXETER LIVESTOCK CENTRE**

*Weekly Store Stock Market to inc Centurion Sheep Breeders Sale of Dorset Ewes and Rams*

### **MONDAY 7<sup>TH</sup> APRIL – EXETER LIVESTOCK CENTRE**

*Weekly Prime Stock Market*

### **WEDNESDAY 9<sup>TH</sup> APRIL – EXETER LIVESTOCK CENTRE**

*Spring Sale of Cattle on behalf of the South Devon Herd Book Society*

### **FRIDAY 11<sup>TH</sup> APRIL – EXETER LIVESTOCK CENTRE**

*Weekly Store Stock Market to inc “Heart of Devon” 13<sup>th</sup> Anniversary – 3<sup>rd</sup> Spring Sale of Continental & Continental X Store Cattle, Special Show & Sale of Charolais Bulls and Females, Sale of Dairy Cattle including English Gold Top Sale of Jerseys, Show & Sale of Suckled Calves, Show and Sale of Ewes and Lambs and Fortnightly Pig Sale*

### **MONDAY 14<sup>TH</sup> APRIL – EXETER LIVESTOCK CENTRE**

*Weekly Prime Stock Market to inc Easter Show & Sale of Spring Lambs*

### **WEDNESDAY 16<sup>TH</sup> APRIL – EXETER LIVESTOCK CENTRE**

*Devon YFC Show & Sale*

### **FRIDAY 18<sup>TH</sup> APRIL – EXETER LIVESTOCK CENTRE**

**GOOD FRIDAY – NO MARKET**

### **MONDAY 21<sup>ST</sup> APRIL – EXETER LIVESTOCK CENTRE**

*Weekly Prime Stock Market*

### **TUESDAY 22<sup>ND</sup> APRIL – EXETER LIVESTOCK CENTRE**

*Sale of TB Restricted, Cull, Prime and Store Cattle*

### **FRIDAY 25<sup>TH</sup> APRIL – EXETER LIVESTOCK CENTRE**

*Weekly Store Stock Market to inc Monthly Sale of Organic Cattle & Sheep, Month Catalogued Sale of Beef Breeding Stock and Fortnightly Pig Sale*

### **MONDAY 28<sup>TH</sup> APRIL – EXETER LIVESTOCK CENTRE**

*Weekly Prime Stock Market*

### **WEDNESDAY 30<sup>TH</sup> APRIL – STAFFORD CROSS, Nr SEATON off A3052 EX24 6HZ**

*East Devon Collective Machinery Sale – for more information please see website.*

### **FRIDAY 2<sup>ND</sup> MAY – EXETER LIVESTOCK CENTRE**

*Weekly Store Stock Market to inc Catalogued Sale of Hogg Couples*

## Farms | Land | Smallholdings

### Thinking of selling?

Kivells are at the heart of the farming community throughout the westcountry and beyond and have been selling farms, land and smallholdings since 1885.



### Our tailor made service includes;

- ✓ Personal and confidential service
- ✓ Experienced team of Farm Agents
- ✓ Tailor made marketing plans across a variety of platforms
- ✓ Network of contacts within the farming community
- ✓ Added value with advice on Tax, Planning and Stewardship



In-house  
bespoke  
brochures



Over 40,000  
followers on  
Social Media



Millions of  
page views on  
kivells.com,  
Rightmove  
& Zoopla



Coverage in  
national and  
regional  
publications

With 140 years of industry experience, we pride ourselves in providing friendly and professional advice on all aspects of selling your farm, land or smallholding.

**Holsworthy  
Launceston**

01409 259547  
01566 776886

**Exeter  
Liskeard**

01392 252262  
01579 345543



# Farms For Sale

# KIVELLS

[www.kivells.com](http://www.kivells.com)

## Blagdon Manor Farm North Tamerton, Holsworthy

**Privately set residential and livestock farm on the Devon/Cornwall border.**

- Just under 200 acres of ring fenced land
- Imposing four/five bedroom Grade II listed farmhouse and two bedroom bungalow (subject to Agricultural Occupancy Condition)
- Extensive range of modern livestock buildings, plus some more traditional stone barns with potential, subject to planning
- Equestrian appeal with stabling, all weather track and sand school/turnout areas
- Huge appeal with enormous potential to diversify

**Guide Price: £2,500,000**

Holsworthy Farms & Land Department  
[farms@kivells.com](mailto:farms@kivells.com) | 01409 259547





# Farms For Sale

# KIVELLS

[www.kivells.com](http://www.kivells.com)

## Tregonhay Farm Kergilliack, Falmouth

**Beautifully positioned stock farm, within easy reach of Falmouth, Helford Passage and the South Coast.**

- Substantial and well appointed six bedroom farmhouse
- Useful range of adaptable buildings
- 85½ acres of private ring-fenced land
- Superb views
- EPC G

**Guide Price: £2,000,000**

Holsworthy Farms & Land Department  
[farms@kivells.com](mailto:farms@kivells.com) | 01409 259547



# Farms For Sale

# KIVELLS

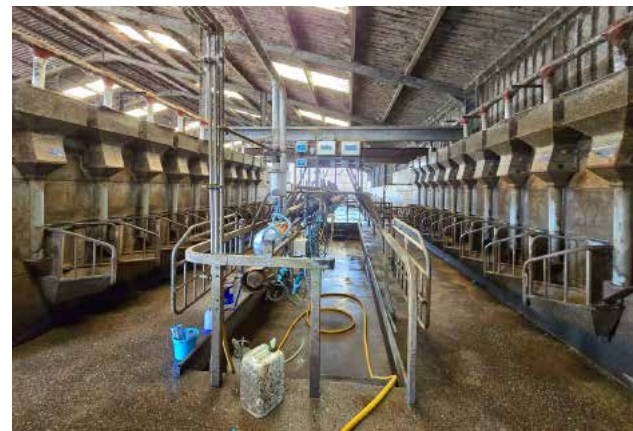
[www.kivells.com](http://www.kivells.com)

## Dairy Unit and Land at Melbury Parkham, Bideford

- Ring fenced modern dairy unit
- 127 cubicles
- 10/20 swing over parlour
- Youngstock building
- Just under 50 acres

**Guide Price: £800,000**

Holworthy Farms & Land Department  
[farms@kivells.com](mailto:farms@kivells.com) | 01409 259547





# Farms For Sale

# KIVELLS

[www.kivells.com](http://www.kivells.com)

## West Burrow Farm Bratton Clovelly, Okehampton

**A quietly set rural small holding offering huge potential.**

- Grade II\* Listed thatched farmhouse in need of modernisation.
- 3 beds, 2 receptions.
- Two adjoining traditional barns.
- Land and woodland

**Guide Price: £750,000**

Holsworthy Farms & Land Department  
[farms@kivells.com](mailto:farms@kivells.com) | 01409 259547





# Farms For Sale

# KIVELLS

[www.kivells.com](http://www.kivells.com)

## Landabethick Farm Blisland, Bodmin

Available as a whole or in 2 lots

- Five/six bedroom (one en suite) detached house, three reception rooms and conservatory
- Splendid private location
- Located on the fringe of the wide expanses of Bodmin Moor; close to the sought-after moorland village of Blisland
- Barns ripe for conversion
- Access to the Camel Trail for walking and cycling only 0.5 miles distant
- In all 77.11 acres of agricultural land and ancient woodland

**LOT 1** - House, buildings and 54.83 acres.  
**Guide Price: £1,450,000**

**LOT 2** - Approximately 22.28 acres of ancient woodland.  
**Guide Price: £150,000**

**As a whole: £1,600,000**

Liskeard Farms & Land Department  
[mark.bunt@kivells.com](mailto:mark.bunt@kivells.com) | 01579 345543



# Farms For Sale

# KIVELLS

[www.kivells.com](http://www.kivells.com)

## Fern Hill Farm Mount, Bodmin

- Farm with significant development potential
- Range of agricultural and equestrian buildings
- 60.29 acres of land including productive pasture
- Two bedroom lodge
- Planning for farm dwelling and residential caravan
- Located in a super rural location with far reaching valley views
- Freehold with vacant possession upon completion

**Guide Price: £1,150,000**

Liskeard Farms & Land Department  
[mark.bunt@kivells.com](mailto:mark.bunt@kivells.com) | 01579 345543



# Farms For Sale

# KIVELLS

[www.kivells.com](http://www.kivells.com)

## Tregaminion Manor Farm Morvah, Pendeen, Penzance

- Idyllic coastal setting
- Ring fenced farm in an Area of Outstanding Natural Beauty
- Multiple dwellings for income generation or multi-generational living
- Period farmhouse and two cottages
- Range of modern and traditional farm buildings
- Development opportunities with some planning consent in place
- In all some 118 acres
- EPC C, G & G.

**Guide Price: £2,500,000**

Holsworthy Farms & Land Department  
[farms@kivells.com](mailto:farms@kivells.com) | 01409 259547





# Farms **For** **Sale**

# KIVELLS

[www.kivells.com](http://www.kivells.com)

## **Higher Norley Farm** Northlew, Okehampton

- Just over 93 acres of productive pasture land
- A useful range of farm buildings including 96 cubicles, loose housing, fodder store and workshop
- Wonderful far reaching views to Dartmoor
- For sale by Private Treaty.

**Guide Price: £1,100,000**

Holsworthy Farms & Land Department  
[farms@kivells.com](mailto:farms@kivells.com) | 01409 259547



# Development Site **For Sale**

# KIVELLS

[www.kivells.com](http://www.kivells.com)

## **Development Site at Lower Newton Farm** Zeal Monachorum, CREDITON, Devon

- Valuable residential development opportunity
- Range of agricultural buildings with planning permission for demolition and creation of three new build, detached four and three bedroom dwellings
- Potential under extension of Permitted Development Rights for retention and conversion of the existing buildings (Clarkson's Law – Maximum 10 dwellings), subject to planning
- Additional land available

**Guide Price: £450,000**

Exeter Farms & Land Department  
[simon.alford@kivells.com](mailto:simon.alford@kivells.com) | 01392 252262



Aerial view looking north west



# Land For Sale

# KIVELLS

[www.kivells.com](http://www.kivells.com)

## Land at Yollaberry

Hatherleigh | Guide Price £120,000 - £140,000



Just over 9¾ acres of gently sloping pasture land in a stunning location with parish road frontage and lane access.

Holsworthy Farms & Land Agency  
[Farms@kivells.com](mailto:Farms@kivells.com) | 01409 259547

## Land at Stoke Canon

Exeter, Devon | Offers in Excess of £375,000



A highly productive run of level arable and pastureland with livestock handling pens extending to just under 46 acres.

Exeter Farms & Land Department  
[simon.alford@kivells.com](mailto:simon.alford@kivells.com) | 01392 252262

## Land at Hole Farm (Lot 1)

Ashwater, Beaworthy | Guide Price £620,000



Approx. 57.58 acres of well farmed productive grassland. Mainly level/gently sloping and extremely well fenced.

Holsworthy Farms & Land Agency  
[Farms@kivells.com](mailto:Farms@kivells.com) | 01409 259547

## Land at Polzeath

Wadebridge, Cornwall | Guide Price £995,000



Just over 15 acres of prime farmland in a stunning location with long term development potential, subject to planning.

Holsworthy Farms & Land Department  
[farms@kivells.com](mailto:farms@kivells.com) | 01409 259547

## Land at Pipswell Cross

Morwenstow, Bude | Guide Price £290,000



Just under 35 acres of productive pasture and arable ground in a sought after farming area with road frontage and access and far-reaching views as far as Lundy Island.

Holsworthy Farms & Land Agency  
[Farms@kivells.com](mailto:Farms@kivells.com) | 01409 259547



# Land for Auction

## Wednesday 9th April, 7.00pm

Venue: Lifton Strawberry Fields, Lifton, Devon PL16 0DE

# KIVELLS

[www.kivells.com](http://www.kivells.com)

### Land at Holemoor

Bradford, Holsworthy | Auction Guide Price £35,000 - £40,000  
For sale by public auction - Wednesday 9th April



Just under 4 acres of gently sloping pasture land on the edge of a rural hamlet boasting road frontage and access and lovely countryside views.

Holsworthy Farms & Land Agency  
[farms@kivells.com](mailto:farms@kivells.com) | 01409 259547

### Land at St. Erney

St. Erney, Landrake, Saltash | Auction Guide Price £65,000  
For sale by public auction - Wednesday 9th April



Extending to some 6.07 acres in all, the Land at Erney comprises a single field, which is currently planted with a variety of brassicas.

Holsworthy Farms & Land Agency  
[farms@kivells.com](mailto:farms@kivells.com) | 01409 259547

### Land at Land at Broad Parkham

Parkham, Bideford | Auction Guide Price £140,000 - £150,000  
For sale by public auction - Wednesday 9th April



14.65 acres comprises two gently sloping pasture fields including a small area of woodland. The land benefits from parish road frontage, good access and natural and mains water.

Holsworthy Farms & Land Agency  
[Farms@kivells.com](mailto:Farms@kivells.com) | 01409 259547

### Land at Highercliff Woods

Duloe, Liskeard | Auction Guide Price £60,000 - £70,000  
For sale by public auction - Wednesday 9th April



Woodland extending to approximately 19.67 acres comprising a block of mature Beech trees supporting a wide range of flora and fauna and situated off a quiet parish road.

Liskeard Farms & Land Agency  
[mark.bunt@kivells.com](mailto:mark.bunt@kivells.com) | 01579 345543

### Land at Venncott

Newton St. Petrock, Holsworthy | Auction Guide Price £60,000  
For sale by public auction - Wednesday 9th April



The Land at Venncott extends to some 6.46 acres and comprises very gently sloping pasture land which is divided into two handy sized enclosures.

Holsworthy Farms & Land Agency  
[Farms@kivells.com](mailto:Farms@kivells.com) | 01409 259547

### Plot of land beside Queensland

Trelights, Port Isaac | Auction Guide Price £50,000  
For sale by public auction - Wednesday 9th April



A generous plot of agricultural land extending to circa 0.22 acres with excellent further potential to add value with a variety of uses, all subject to obtaining the necessary planning consents.

Launceston Estate Agents  
[launceston@kivells.com](mailto:launceston@kivells.com) | 01566 777777

# Land for Auction

## Wednesday 9th April, 7.00pm

Venue: Lifton Strawberry Fields, Lifton, Devon PL16 0DE

# KIVELLS

[www.kivells.com](http://www.kivells.com)

### Land at Fox Hole (Lot 1)

Whitstone, Holsworthy | Auction Guide Price £150,000  
For sale by public auction - Wednesday 9th April



Approximately 19.73 acres of level pasture land with road frontage in a rural yet accessible location.

Holsworthy Farms & Land Agency  
[farms@kivells.com](mailto:farms@kivells.com) | 01409 259547

### Land at Fox Hole (Lot 2)

Whitstone, Holsworthy | Auction Guide Price £45,000  
For sale by public auction - Wednesday 9th April



A single level pasture field of approximately 6.49 acres in a quiet rural location.

Holsworthy Farms & Land Agency  
[farms@kivells.com](mailto:farms@kivells.com) | 01409 259547

## ID Requirements

All auctioneers are now required to verify the identity of all bidders before the auction. Bidders will need to register with Kivells on the night of the auction and, in doing so, will be required to provide one form of government issued photographic identity and a utility bill addressed to them at their home address, dated within 3 months of the date of the auction. If we are not fully satisfied, we will not be able to proceed with the transaction.



## 2025 Auction Dates

9th April  
14th May  
18th June  
30th July  
3rd September  
8th October  
12th November  
30th December

For further details,  
including times, venue  
and information on  
how you can bid  
online, please visit

[www.kivells.com](http://www.kivells.com)



# Previous Auction Results

Wednesday 12th March

# KIVELLS

[www.kivells.com](http://www.kivells.com)

## Land at Fiddlecott

Chawleigh, Chulmleigh | Auction Guide Price £175,000  
**SOLD: £256,000**



Extending to some 25.46 acres comprising a useful block of gently sloping grass land with just under 8 acres of scrub and native woodland on its southern boundary.

**Holsworthy Farms & Land Agency**  
[farms@kivells.com](mailto:farms@kivells.com) | 01409 259547

## Land at Boldventure

Germansweek, Beaworthy | Auction Guide Price £75,000 - £95,000  
**SOLD: £90,000**



Approximately 12 acres of pastureland with excellent road access and accessible to Launceston, Okehampton, Bude and Holsworthy.

**Holsworthy Estate Agents**  
[holsworthy@kivells.com](mailto:holsworthy@kivells.com) | 01409 253 888

## Land at Penvith

St. Martin, Looe | Auction Guide Price £50,000 - £55,000  
**SOLD: £116,000**



5.47 acres of pasture land in a single enclosure with parish road frontage and a timber frame and timber clad field shelter. Freehold with vacant possession upon completion.

**Liskeard Farms & Land Department**  
[mark.bunt@kivells.com](mailto:mark.bunt@kivells.com) | 01579 345 543

## Land near St Winwolaus's Church

Tremaine, Launceston | Auction Guide Price £10,000  
**SOLD: £9,000**



Approximately 0.24 acres of land in a rural yet convenient location suitable for a number of purposes including amenity or recreational use.

**Holsworthy Farms & Land Agency**  
[Farms@kivells.com](mailto:Farms@kivells.com) | 01409 259547

## Land at Scrubtor

Tavistock | Auction Guide Price £45,000 - £50,000  
**SOLD: £50,000**



Approximately 3.49 acres of pasture land in a single gently sloping enclosure with parish road frontage.

**Liskeard Farms & Land Agency**  
[mark.bunt@kivells.com](mailto:mark.bunt@kivells.com) | 01579 345543



# Farms Sale Agreed

# KIVELLS

[www.kivells.com](http://www.kivells.com)

## Keymelford Farm Buildings & Land Keymelford, Colebrook, Crediton, Devon



**Lot 1** - Agricultural buildings and yard area with land surrounding extending to 0.41 acres.  
**Guide Price: £150,000**

**Lot 2** - Agricultural building with concrete pad and land surrounding extending to 0.41 acres.  
**Guide Price: £135,000**

**Lot 3** - A small grassland area extending to approximately 0.14 acres. **Guide Price: £25,000**

Exeter Farms & Land Agency  
[exeter@kivells.com](mailto:exeter@kivells.com) | 01392 252262

## Pheasantry Farm Chawleigh, Chulmleigh



**Lot 1:** Pheasantry Farm Bungalow, Gardens, Agricultural Buildings and approximately 5.83 acres of land.  
**Guide Price: £625,000**

**Lot 2:** Agricultural Building together with approximately 5.96 acres of land.  
**Guide Price: £125,000**

**Guide Price as a Whole: £750,000**

Exeter Farms & Land Department  
[ian.caunter@kivells.com](mailto:ian.caunter@kivells.com) | 01392 252 262

# Farms Sale Agreed

# KIVELLS

[www.kivells.com](http://www.kivells.com)

## Worthen Farm Pyworthy, Holsworthy, Devon



- Grassy ring fenced stock farm with 151 acres
- South facing three bedroom period farmhouse and adjoining two bedroom cottage (suitable for holiday letting)
- Two further traditional barns with potential for conversion, subject to planning
- Range of adaptable farm buildings
- Level and gently sloping pasture land
- EPC D & D

**Guide Price: £2,150,000**

Holsworthy Farms & Land Department  
[farms@kivells.com](mailto:farms@kivells.com) | 01409 259547

## Larrick Farm South Petherwin, Launceston

- Super reverse living barn conversion
- 4 bedrooms and 2 bathrooms
- Outbuildings for livestock or equestrian use
- 45 acres of pasture land

**Guide Price: £1,000,000**

Holsworthy Farms & Land Department  
[farms@kivells.com](mailto:farms@kivells.com) | 01409 259547





# Land Sold

# KIVELLS

[www.kivells.com](http://www.kivells.com)

## Land at High Ridge Farm North Tawton, Devon



A highly productive run of approx. 34 acres of level pasture land with planning permission for a 80ft x 40ft storage shed.

**Guide Price £340,000**

Exeter Farms & Land Department  
[simon.alford@kivells.com](mailto:simon.alford@kivells.com) | 01392 252262

# Land Sale Agreed

## Land at Lower Rescorla Farm Rescorla, St Austell | Guide Price £100,000



Just under 4 acres of sloping amenity/pasture land on the edge of a rural hamlet. Possible development potential (STP)

Holsworthy Farms & Land Agency  
[Farms@kivells.com](mailto:Farms@kivells.com) | 01409 259547

## Land at Southcombe Northlew, Okehampton | Guide Price £130,000



A block of approx. 19.14 acres of peacefully located pretty pasture and woodland, gently sloping and in three good sized enclosures with a natural water supply.

Holsworthy Farms & Land Agency  
[Farms@kivells.com](mailto:Farms@kivells.com) | 01409 259547



# Land Sale Agreed

# KIVELLS

www.kivells.com

## Land at Wooldown

Marhamchurch, Bude | Guide Price £100,000



An attractive and very gently sloping pasture field extending to approx. 4.63 acres, well fenced with road frontage and good access.

Holsworthy Farms & Land Agency  
Farms@kivells.com | 01409 259547

## Land at Hole Farm (Lot 2)

Ashwater, Beaworthy | Guide Price £375,000



Just over 37 acres of well farmed, productive grassland. Mainly level/gently sloping and extremely well fenced. Mains and natural water supplies.

Holsworthy Farms & Land Agency  
Farms@kivells.com | 01409 259547

## Land at Cransworth

St. Wenn, Bodmin | Guide Price £525,000



Approx. 57 acres of productive pasture land, gently sloping and south facing with road frontage and a natural water available.

Holsworthy Farms & Land Agency  
Farms@kivells.com | 01409 259547

## Land at West Vognacott & Honeycroft (Lot 1)

Chilsworthy, Holsworthy | Guide Price £345,000



Just under 55 acres of pasture and amenity land in a quiet, rural setting. Further land available (lots 2 & 3).

Holsworthy Farms & Land Agency  
Farms@kivells.com | 01409 259547

## Land at West Vognacott & Honeycroft (Lot 2)

Chilsworthy, Holsworthy | Guide Price £200,000



Some 29 acres of pasture land in a quiet rural, yet accessible location. Further land available as Lots 1 & 3.

Holsworthy Farms & Land Agency  
Farms@kivells.com | 01409 259547

## Land at Myrtle Cottage Farm

Alverdiscott, Barnstaple | Offers in Excess of £425,000



A cracking run of nearly 43 acres of pasture land, level and gently sloping with road frontage and excellent access.

Holsworthy Farms & Land Agency  
Farms@kivells.com | 01409 259547